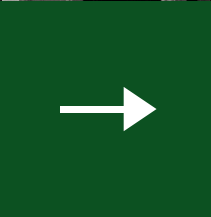




Bringing your visions to life



# About us

We hold ourselves to a higher standard in the solutions we engineer for our clients, in our collaborative approach to problem-solving, in the integrity that guides our every move. JMVC CSE brings value to our clients by providing exceptional structural engineering design and our commitment to excellence.



Our mission

**"QUALITY PROJECTS - ONE  
ENTERPRISE, ONE FAMILY, AND  
ONE BUILDING AT A TIME."**

GLORIFY THE ART IN ALL TYPES OF STRUCTURES



# Core Team



**MARIA  
ALFRED**

Structural  
Engineer



**ANGELA P.  
CARIAGA**

Structural  
Engineer

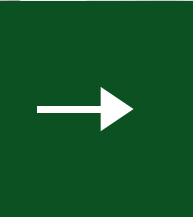
**JAY MARK V.  
CASTILLO**

Principal  
Structural  
Engineer



**PAULE  
EMPESTAN  
PEROY**

Structural  
Engineer



# RECENT AWARDS AND RECOGNITIONS



**2020 GOLDEN GLOBE ANNUAL AWARDS COUNCIL**  
Golden Globe Annual Awards For Business Excellence (GGAABE).



**ASSOCIATION OF STRUCTURAL ENGINEERS**  
Participation in 19th ASEP International Convention "Structural Engineering for Infrastructure Resilience"



**AIT SOLUTIONS (AITS)**  
Participation in Seminar and Workshop on Analysis and Design of Tall Buildings.



**2021 PHILIPPINE TOP CHOICE AWARDS FOR EXCELLENCE**  
Top Choice Premier Structural Engineering Services Provider



**2021 GOLDEN GLOBE ANNUAL AWARDS COUNCIL**  
Golden Globe Annual Awards For Business Excellence (GGAABE) 2021.

# Services

## STRUCTURAL ENGINEERING

Cast-in-place Concrete Frames, Pre-Cast Concrete Frames, Post-Tensioned Concrete Frames, Steel Moment Frames, Steel Braced Frames, Hybrid Structures, Timber Frames, Masonry, Reinforced Concrete Slabs, Hollow Core Slabs, Ribbed and Waffle Slabs, Pad Foundations, Mat/Raft Foundations

## CIVIL ENGINEERING

Roads and Car Parking Pavements, Piling and Ground Improvements, Cantilevered Retaining Walls, Gabion Retaining Walls, Steel Sheet Pilings, Slope Stability, Steel Bridges, Precast Concrete Bridges, Deep Foundations, Culverts, Reed Beds/Septic Tanks/Soakaways, SUDS

# Services

## PLANNING APPLICATION & BUILDING REGULATIONS (UK)

Rear Extension, Side Extension, Upper Floor Extension, Basement Extension, Loft Conversions, Alteration, New Build Structures, Chimney Breast Removal, Internal Wall Removal, Garage Conversion, Barn Conversion, Underpinning

## SPECIALIST DESIGN

Façade Structures, Structural Insulated Panels (SIPs), Oak Structural Frame, Post and Beam Structures, Structural Glass, Spiral Stairs (Steel, Aluminum, Glass)

## DRAFTING & DESIGN

Steel Fabrication/Shop Drawings, Architectural CAD Drafting, Civil/Structural CAD Drafting, Material Takeoffs and Estimates

Our philosophy

**"WE DESIGN YOUR PROJECT  
DOWN TO THE LAST DETAIL."**

JMVC CSE





# How we work

## PHASE 1

Analyzing the architectural drawings and checking codes.

## PHASE 2

Collecting loading parameters and laying out the preliminary framing configurations.

## PHASE 3

Designing the structural elements and iteration to optimize cost and safety.

## PHASE 4

Structural plan and detail productions.





## BYRON GREINER

Licensed Realtor at Keller Williams

JMVC did all the necessary load calculations and drawings needed to get my permit on a duplex in hot West Asheville...

## DORINE WOLLANGK

Florida Realtor at LoKation Real Estate

Jay designs and engineers great structures. He's personable and easy to work with...



## WILLIAM PEDRICK

Managing Director at Zapkam Limited

Maria worked on a project for my personal property and couldn't have been harder working or more professional...

# Client testimonials



## IAN KALINOWSKY

President, CEO and owner  
at Great Canadian Travel  
Company

JMVC-CSE was great to work  
with on a complicated design  
process involving an existing  
boathouse which needed a  
new foundation...

# Client testimonials



## LYNNE BRAIDWOOD

VP Business Development at Virttu Biologics

Every single time their work has been top class  
and delivered on time as promised...



# Client testimonials



## ANDY RAPPAPORT

Chief Investment Officer of SPW Investments

Clear communication, very fast and thoughtful response...

## JUDE JACOBS

President at Kings And Castle Group Inc

Highly skilled in structural engineering.

Possesses customer service skills. Business relation development acumen...



## BABAK SEDEHI

Founder, President at NexDome Observatories Inc.

Very responsive, professional and most importantly job done perfect and on time...



Strong experienced team of licensed engineers,  
drafters and designers.

# "HUNDREDS OF RESIDENTIAL, COMMERCIAL, AND INDUSTRIAL PROJECTS."

WE'VE ALWAYS BELIEVED IN PAYING SPECIAL  
ATTENTION TO DETAIL.



## Commercial projects

### Bound Brook Mixed-Use Design

Location: Bound Brook, NJ

Size: 582,478 sq. ft.

Sprawling complex on West Main Street, in the heart of Bound Brook, New Jersey. A variety of retail and boutique businesses on the first floor, with street frontage.

## Commercial projects

### 3-Story Shopping Centre

Location: Riyadh, KSA

Size: 2,500 sq. m.

3-floor level reinforced concrete moment resisting frame luxury commercial building with the top deck having 3.2m cantilevered pergolas.



## Industrial projects

Cultivation Building

Location: Boston, MA

Size: 39,300 sq. ft.

Plantation building constructed using steel frames.





## Commercial projects

Al Wasl Plaza Utility Building

Location: Dubai, UAE

Size: 330 sq. m.

Aluminum cladding on all sides with varying heights fixed into structural steel frames.



## Commercial projects

### Retail Development

Location: Oklahoma City, OK

Size: 5,580 sq. ft.

Braced steel frame commercial building consisting of SJI roof joists and light gauge steel trusses.



## Institutional projects

### Zaria School Building

Location: Zaria, Nigeria

Size: 4,730 sq. m.

3-Story precast concrete school building with steel trusses.



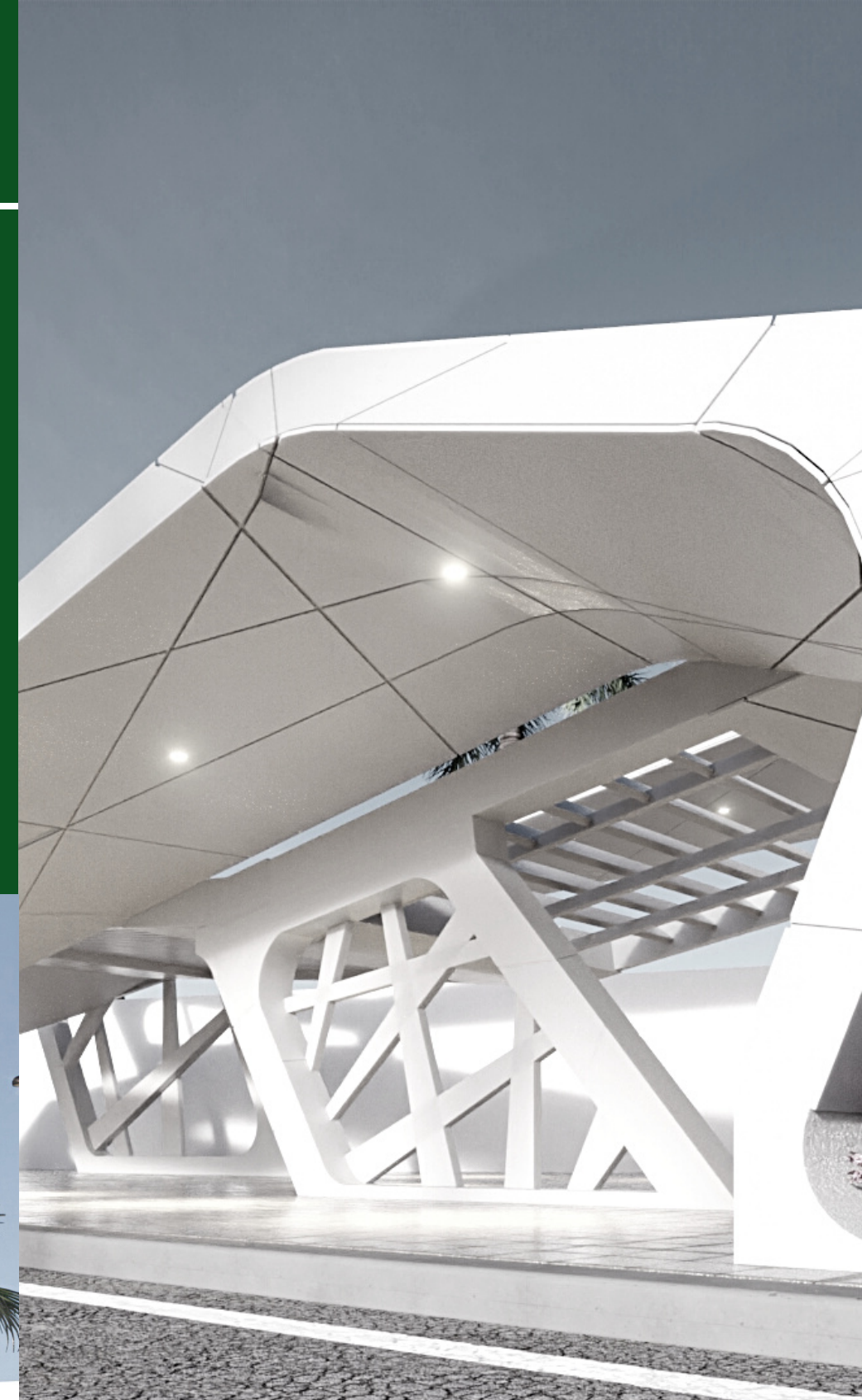
## Commercial projects

Steel Frame Shade

Location: Riyadh, KSA

Size: 440 sq. m.

Organic shade design composed of hollow steel section.



## Residential projects

Split Level Modern House

Location: El Dorado Hills, CA

Size: 12,095 sq. ft.

Modern wood frame construction in three levels with a pool.



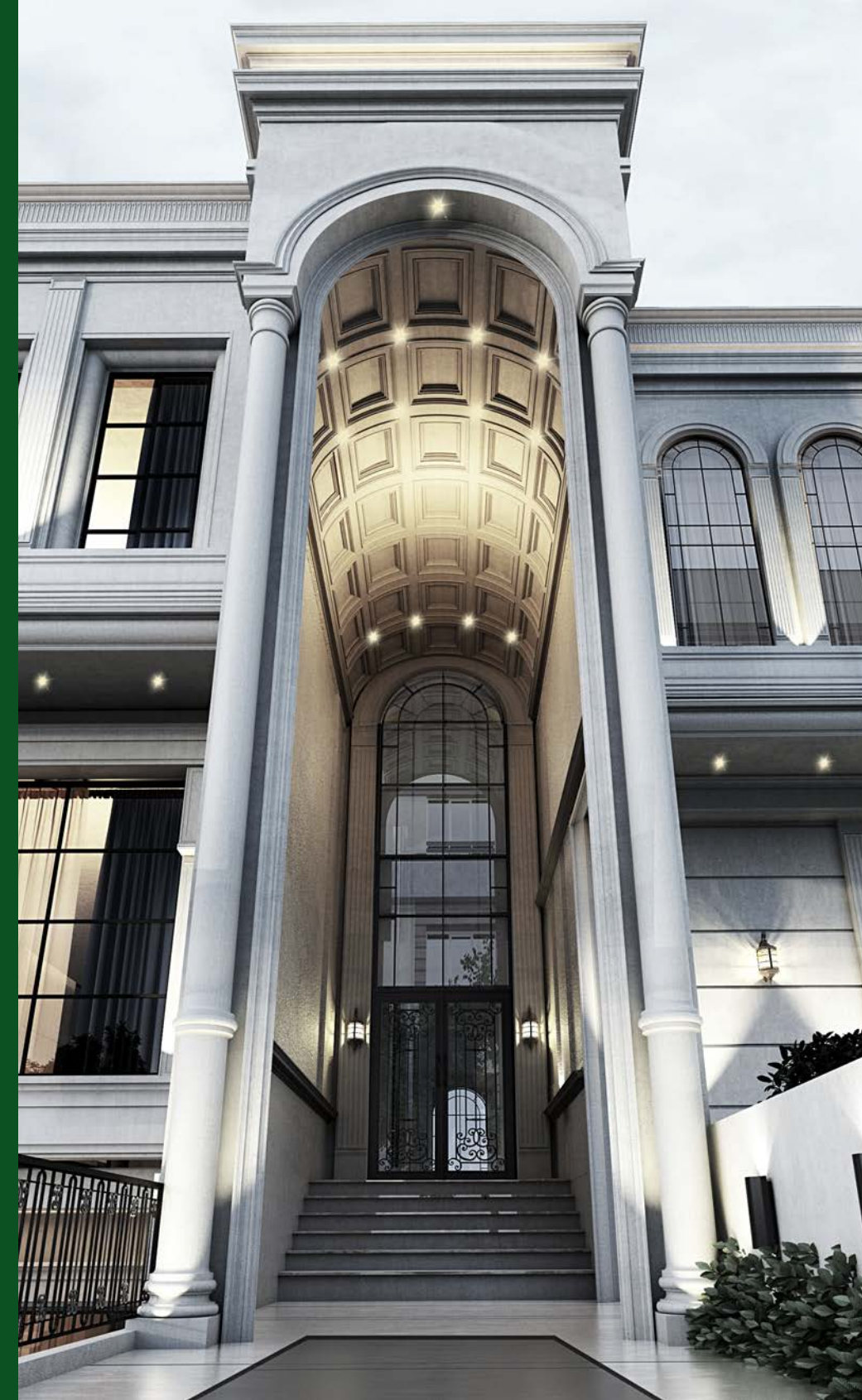
## Residential projects

### 3-Story Villa

Location: Riyadh, KSA

Size: 967 sq. m.

Basement and integrated underground water tank and driver's room both of which are underground.





## Residential projects

Lake House

Location: Eastford, CT

Size: 7,900 sq. ft.

Low maintenance multi story home.

## Residential projects

7-Story, 10th Ave Flats

Location: Seattle, WA

Size: 67,000 sq. ft.

Built with cold-formed steel frames and reinforced concrete core wall.



## Residential projects

Rural Resort

Location: Dammam, KSA

Size: 1,618 sq. m.

Rural resort design with an area of 11,919 sq. m.



## Residential projects

### 2-Story Residence

Location: Cedar Run, VA

Size: 6,859 sq. ft.

2-floor house with a two-car garage used wood structural framing on all the floors, walls, and roof.



## Residential projects

Industrial House

Location: Essex, MA

Size: 3,022 sq. ft.

Bungalow refurbishment of  
an existing house.



## Residential projects

2-Story w/ 2-Level Basement

Location: Wembley, UK

Size: 220 sq. m.

2-story house with 2-level basement.



gk  
GATE  
APARTMENTS

## Renovation projects

B1 Offices to C3 Apartments

Location: Leeds, UK

Size: 470 sq. m.

3-story office converted to apartments.



# Our clients

TODAY, WE ARE PRIVILEGED TO CONNECT WITH HUNDREDS OF CLIENTS WITH EXCEPTIONAL SERVICES WITH MORE THAN 4,000,000 SQ. FT. COVERED.

We've been earning our clients' trust since 2014. An award-winning, full-service constructional design firm, we understand that our client's success stories are our only achievement. Our work requires tenacity and flexibility, the same qualities our clients demand.





FACEBOOK

@jmvccse



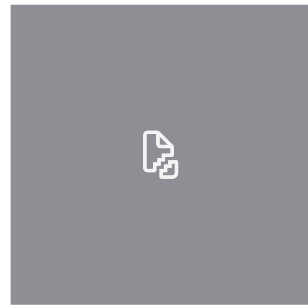
LINKEDIN

@jmvccse



INSTAGRAM

@jmvccse



TWITTER

@jmvccse

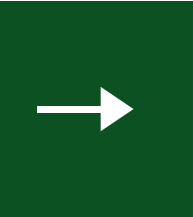


YOUTUBE

jmvccse



**FOLLOW US**



# Work with us



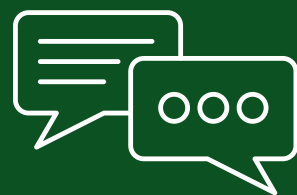
## WEBSITE

[www.jmvccse.com](http://www.jmvccse.com)



## EMAIL

[info@jmvccse.com](mailto:info@jmvccse.com)



## CONTACT NUMBER

+63 928 837 2667