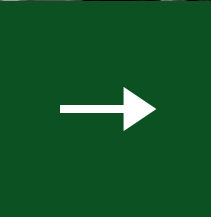


# JMVVC

CONSULTING STRUCTURAL ENGINEERS

Bringing your visions to life



# About us

We hold ourselves to a higher standard in the solutions we engineer for our clients, in our collaborative approach to problem-solving, in the integrity that guides our every move. JMVC CSE brings value to our clients by providing exceptional structural engineering design and our commitment to excellence.



# MISSION

Our mission is to deliver safe, efficient, and code-compliant structural engineering solutions that serve real-world construction, protect public safety, and create lasting value for our clients.

We do this by applying sound engineering judgment, international best practices, and practical constructability thinking across every project we undertake.



# VISION

Our vision is to be a globally trusted structural engineering consultancy, known for technical excellence, reliability, and integrity across diverse markets and building systems.

We strive to build structures and professional relationships that stand the test of time through disciplined engineering, continuous improvement, and responsible leadership.



# Core Values



01

## Engineering Integrity and Accountability

We place public safety, technical accuracy, and professional responsibility above all else. Every design decision is grounded in sound engineering principles, not convenience or assumption.

We take full ownership of our work from concept through construction support. Each project is reviewed, coordinated, and delivered with clear accountability and professional responsibility.

02

## Code-Driven Discipline and Local Compliance

We design strictly in accordance with governing codes, standards, and jurisdictional requirements. Our work is structured, traceable, and defensible under technical and regulatory review.

We bring international experience while respecting local codes, practices, and site-specific conditions. Every project is approached with regional awareness and professional adaptability.

03

## Practical Constructability

We engineer with a clear understanding of how structures are actually built. Our solutions balance structural performance, cost efficiency, and constructability in the field.

Design intent is always aligned with real-world execution.

04

## Collaboration and Clarity

We communicate clearly and work closely with clients, architects, contractors, and reviewers. Our objective is to reduce ambiguity, resolve issues early, and maintain steady project momentum.

Effective coordination is fundamental to successful delivery.

05

## Continuous Improvement

We invest in our people, tools, and processes to consistently elevate quality and efficiency. We embrace learning, innovation, and technology to strengthen our engineering practice and long-term value delivery.

06

## Global Perspective with Professional Adaptability

Our experience spans multiple regions and regulatory environments. We integrate global best practices with local compliance, ensuring each project reflects both technical excellence and contextual intelligence.

# Core Team



**JAY MARK V.  
CASTILLO**

Principal  
Structural  
Design  
Engineer



**ARJON PAULE  
PEROY**

Lead Structural  
Design  
Engineer



**MARIA  
ALFRED**

Lead Structural  
Design  
Engineer (UK)



**KIM PAOLO  
AQUINO**

Sr. Structural  
Design  
Engineer



---

# AWARDS AND RECOGNITIONS



## INSTITUTION OF SPECIALIST STRUCTURAL ENGINEERS OF THE PHILIPPINES, INC. (ISSEP)

Participation in the 6<sup>th</sup> Technical Conference of ISSEP on In-depth Solutions to Structural Engineering Problems (2025)



## 22nd ASEP INTERNATIONAL CONVENTION

Structural Engineering:  
Transforming Communities  
Towards a Better Quality of Life  
(2025)



# AWARDS AND RECOGNITIONS



**2020 GOLDEN GLOBE ANNUAL AWARDS COUNCIL**  
Golden Globe Annual Awards For Business Excellence (GGAABE).



**ASSOCIATION OF STRUCTURAL ENGINEERS**  
Participation in 19th ASEP International Convention "Structural Engineering for Infrastructure Resilience"



**AIT SOLUTIONS (AITS)**  
Participation in Seminar and Workshop on Analysis and Design of Tall Buildings.



**2021 PHILIPPINE TOP CHOICE AWARDS FOR EXCELLENCE**  
Top Choice Premier Structural Engineering Services Provider



**2021 GOLDEN GLOBE ANNUAL AWARDS COUNCIL**  
Golden Globe Annual Awards For Business Excellence (GGAABE) 2021.



---

# Services

## STRUCTURAL ENGINEERING

Cast-in-place Concrete Frames, Pre-Cast Concrete Frames, Cold-formed Steel Frames (CFS), Insulated Concrete Forms (ICF), Post-Tensioned Concrete Frames, Steel Moment Frames, Steel Braced Frames, Hybrid Structures, Timber Frames, Masonry, Reinforced Concrete Slabs, Hollow Core Slabs, Ribbed and Waffle Slabs, Pad Foundations, Mat/Raft Foundations

## CIVIL ENGINEERING

Roads and Car Parking Pavements, Piling and Ground Improvements, Cantilevered Retaining Walls, Gabion Retaining Walls, Steel Sheet Piling, Slope Stability, Steel Bridges, Precast Concrete Bridges, Deep Foundations, Culverts, Reed Beds/Septic Tanks/Soakaways, SUDS

---

# Services

## PLANNING APPLICATION & BUILDING REGULATIONS (UK)

Rear Extension, Side Extension, Upper Floor Extension, Basement Extension, Loft Conversions, Alteration, New Build Structures, Chimney Breast Removal, Internal Wall Removal, Garage Conversion, Barn Conversion, Underpinning

## SPECIALIST DESIGN

Façade Structures, Structural Insulated Panels (SIPs), Oak Structural Frame, Post and Beam Structures, Structural Glass, Spiral Stairs (Steel, Aluminum, Glass)

## DRAFTING & DESIGN

Steel Fabrication/Shop Drawings, Architectural CAD Drafting, Civil/Structural CAD Drafting, Material Takeoffs and Estimates



---

Our philosophy

**"WE DESIGN YOUR PROJECT  
DOWN TO THE LAST DETAIL."**

JMVC CONSULTING STRUCTURAL ENGINEERS



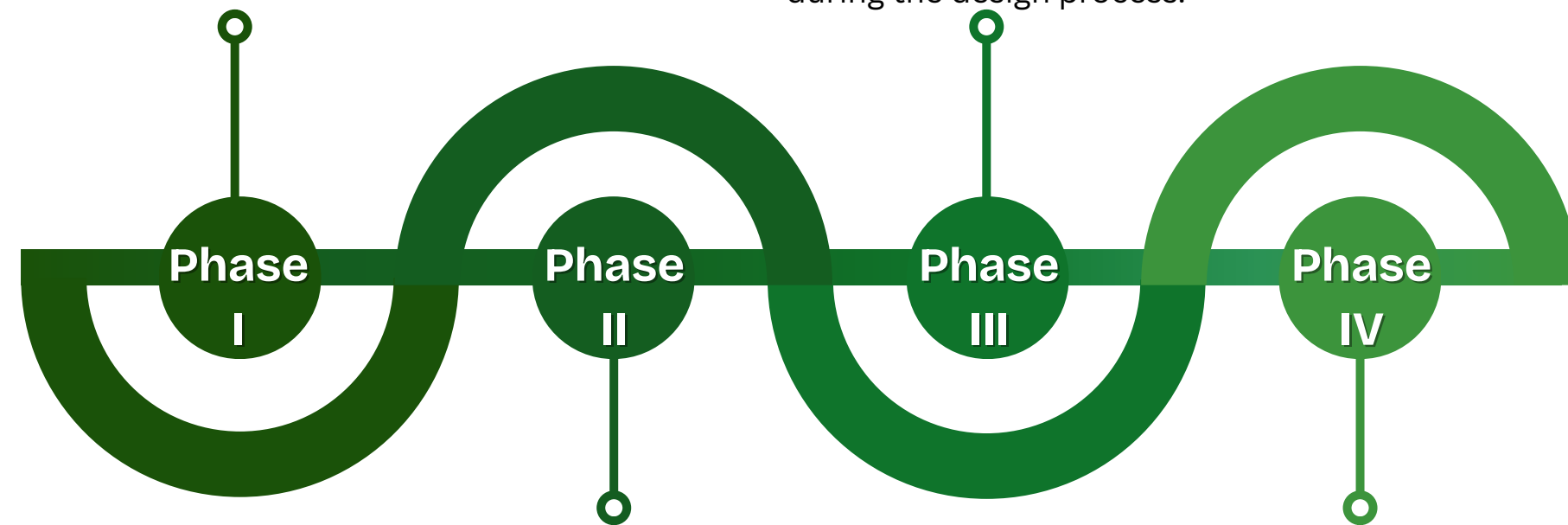
# How we work

**Analyzing the architectural drawings and checking codes.**

Once we received the architectural plans, we start by analyzing the issued plans carefully and look for possible issues that may affect the structural integrity of the building.

**Designing the structural elements and iteration to optimize cost and safety.**

Running the analysis and design calculations based on the preliminary framing layouts with all the specified loadings applied and keeping in mind the code standards to conform to during the design process.

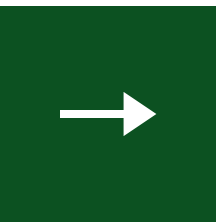


**Collecting loading parameters and laying-out the preliminary framing configurations.**

Site-specific wind, seismic, and snow loading parameters are being collected, and then running the wind, seismic, and snow loading analysis using these pieces of information.

**Structural plan and detail productions.**

We then translate our structural designs into detailed structural engineering plans and details to illustrate how the structure is to be built and provides a clear understanding and instruction to the builder as well as to the building officials.





## BYRON GREINER

Licensed Realtor at Keller Williams

JMVC did all the necessary load calculations and drawings needed to get my permit on a duplex in hot West Asheville...

## DORINE WOLLANGK

Florida Realtor at LoKation Real Estate

Jay designs and engineers great structures. He's personable and easy to work with...



## WILLIAM PEDRICK

Managing Director at Zapkam Limited

Maria worked on a project for my personal property and couldn't have been harder working or more professional...

# Client testimonials



# Client testimonials

## IAN KALINOWSKY

President, CEO and owner at Great Canadian Travel Company

JMVC-CSE was great to work with on a complicated design process involving an existing boathouse which needed a new foundation...



## LYNNE BRAIDWOOD

VP Business Development at Virttu Biologics

Every single time their work has been top class and delivered on time as promised...



---

# Client testimonials



**ANDY RAPPAPORT**

Chief Investment Officer of SPW Investments

Clear communication, very fast and thoughtful response...

**JUDE JACOBS**

President at Kings And Castle Group Inc

Highly skilled in structural engineering.

Possesses customer service skills. Business relation development acumen...



**BABAK SEDEHI**

Founder, President at NexDome Observatories Inc.

Very responsive, professional and most importantly job done perfect and on time...



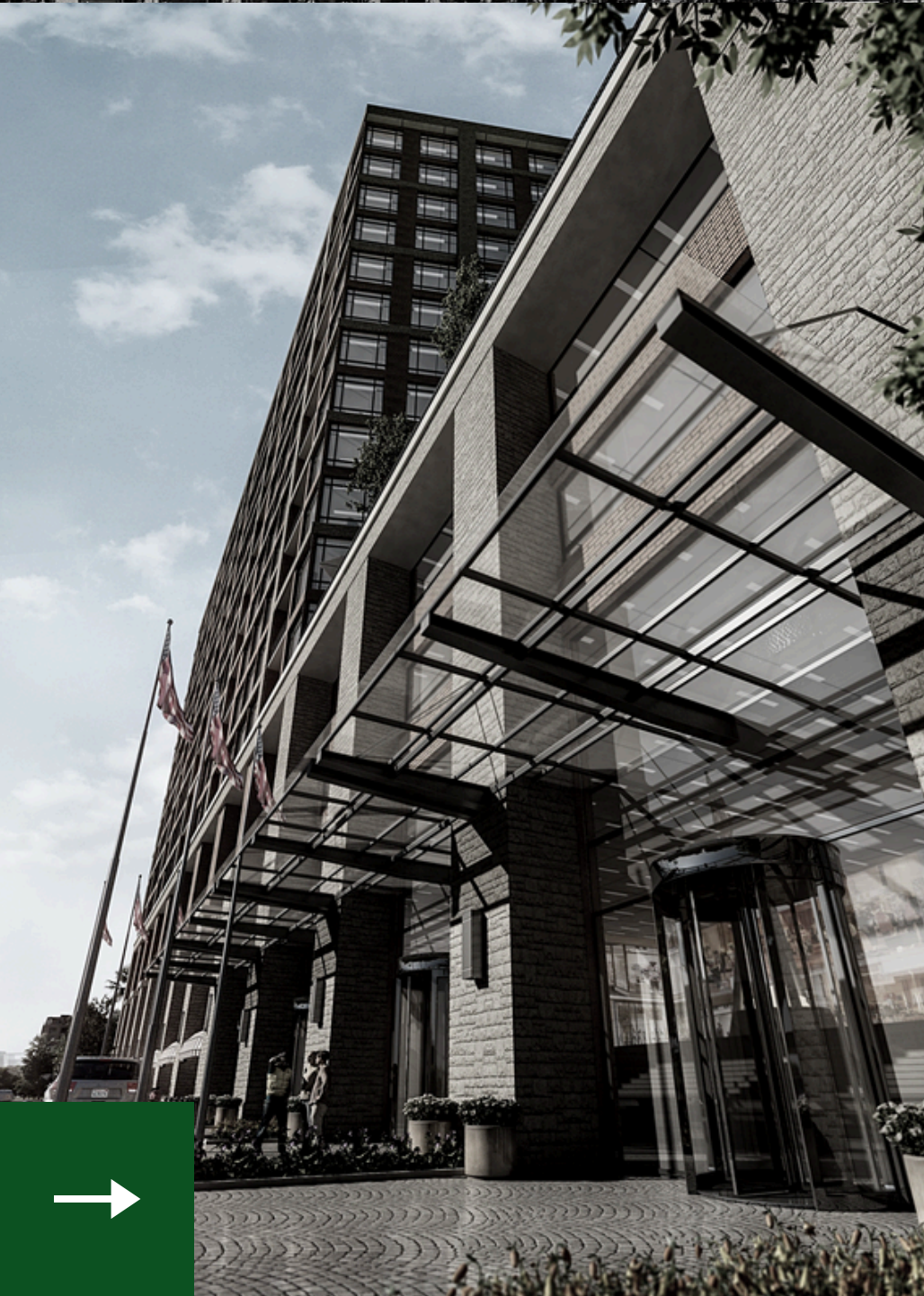
---

Strong experienced team of licensed engineers,  
drafters and designers.

**"THOUSANDS OF RESIDENTIAL,  
COMMERCIAL, AND INDUSTRIAL  
PROJECTS."**

WE'VE ALWAYS BELIEVED IN PAYING SPECIAL  
ATTENTION TO DETAIL.





## Commercial projects

### Bound Brook Mixed-Use Design

Location: Bound Brook, NJ

Size: 582,478 sq. ft.

Sprawling complex on West Main Street, in the heart of Bound Brook, New Jersey. A variety of retail and boutique businesses on the first floor, with street frontage.



## Commercial projects

### 3-Story Shopping Centre

Location: Riyadh, KSA

Size: 2,500 sq. m.

3-floor level reinforced concrete moment resisting frame luxury commercial building with the top deck having 3.2m cantilevered pergolas.



---

## Industrial projects

Cultivation Building

Location: Boston, MA

Size: 39,300 sq. ft.

Plantation building constructed using steel frames.





## Commercial projects

Al Wasl Plaza Utility Building

Location: Dubai, UAE

Size: 330 sq. m.

Aluminum cladding on all sides with varying heights fixed into structural steel frames.



## Commercial projects

Retail Development

Location: Oklahoma City, OK

Size: 5,580 sq. ft.

Braced steel frame commercial building consisting of SJI roof joists and light gauge steel trusses.





## Institutional projects

### Zaria School Building

Location: Zaria, Nigeria

Size: 4,730 sq. m.

3-Story precast concrete school building with steel trusses.



---

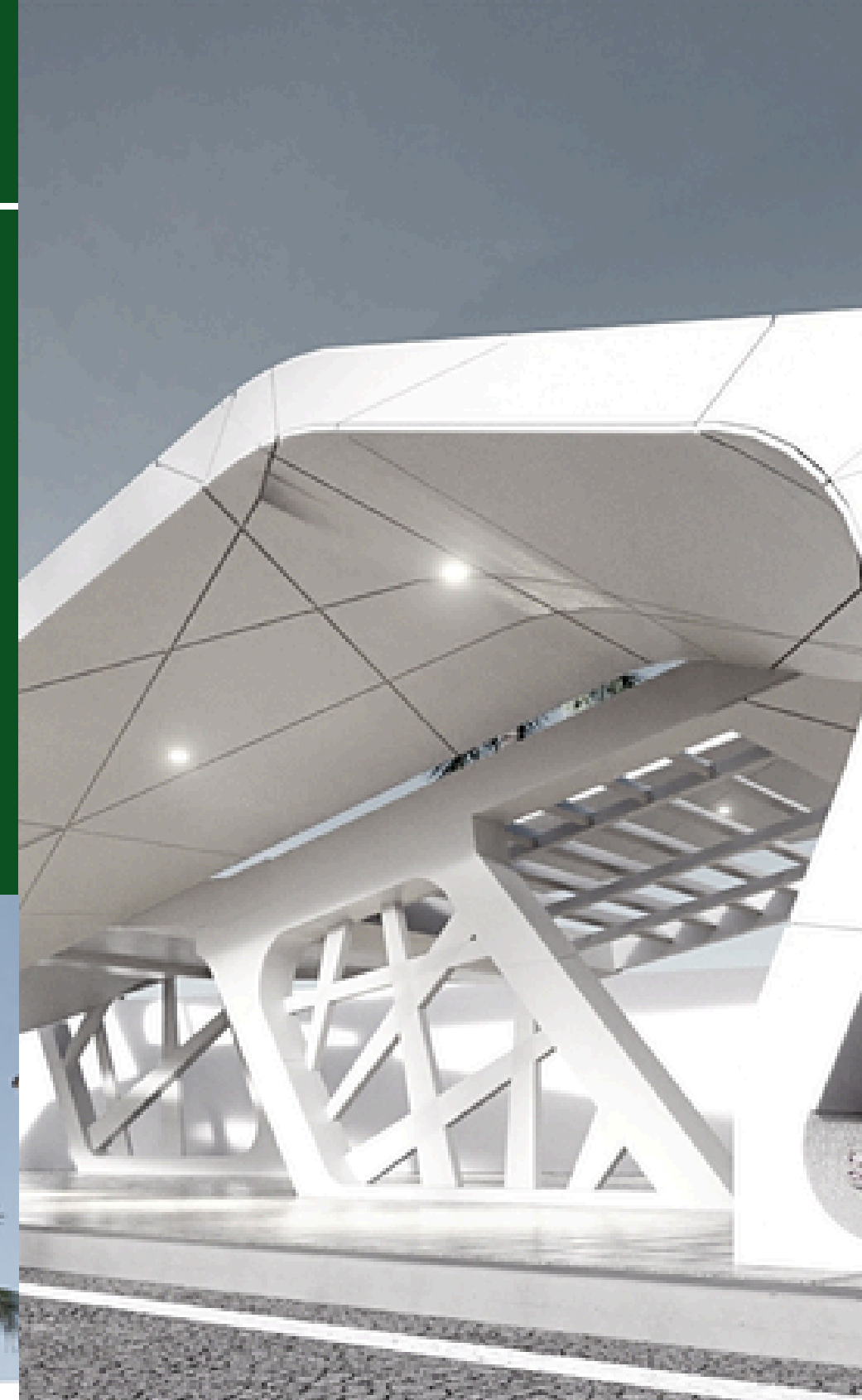
## Commercial projects

Steel Frame Shade

Location: Riyadh, KSA

Size: 440 sq. m.

Organic shade design composed of hollow steel section.





## Residential projects

Split Level Modern House

Location: El Dorado Hills, CA

Size: 12,095 sq. ft.

Modern wood frame construction in three levels with a pool.





## Residential projects

### 3-Story Villa

Location: Riyadh, KSA

Size: 967 sq. m.

Basement and integrated underground water tank and driver's room both of which are underground.





## Residential projects

Lake House

Location: Eastford, CT

Size: 7,900 sq. ft.

Low maintenance multi story home.



## Residential projects

7-Story, 10th Ave Flats

Location: Seattle, WA

Size: 67,000 sq. ft.

Built with cold-formed steel frames and reinforced concrete core wall.



---

## Residential projects

Rural Resort

Location: Dammam, KSA

Size: 1,618 sq. m.

Rural resort design with an area of 11,919 sq. m.



---

## Residential projects

### 2-Story Residence

Location: Cedar Run, VA

Size: 6,859 sq. ft.

2-floor house with a two-car garage used wood structural framing on all the floors, walls, and roof.





## Residential projects

Industrial House

Location: Essex, MA

Size: 3,022 sq. ft.

Bungalow refurbishment of  
an existing house.





## Residential projects

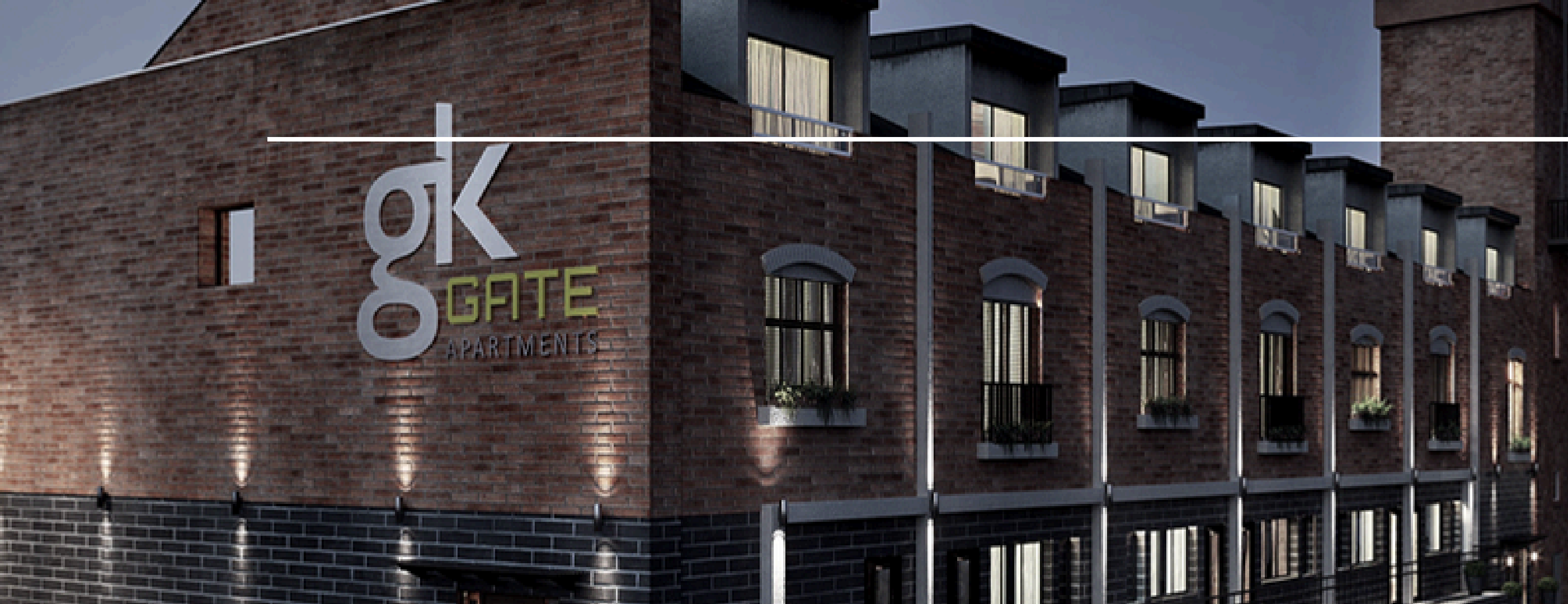
2-Story w/ 2-Level Basement

Location: Wembley, UK

Size: 220 sq. m.

2-story house with 2-level basement.





## Renovation projects

B1 Offices to C3 Apartments

Location: Leeds, UK

Size: 470 sq. m.

3-story office converted to apartments.

---

# Our clients

TODAY, WE ARE PRIVILEGED TO CONNECT WITH HUNDREDS OF CLIENTS WITH EXCEPTIONAL SERVICES WITH MORE THAN 2,000,000 SQ. FT. COVERED.

We've been earning our clients' trust since 2014. An award-winning, full-service constructional design firm, we understand that our client's success stories are our only achievement. Our work requires tenacity and flexibility, the same qualities our clients demand.





FACEBOOK

@jmvccse



LINKEDIN

@jmvccse



INSTAGRAM

@jmvccse



TWITTER

@jmvccse



YOUTUBE

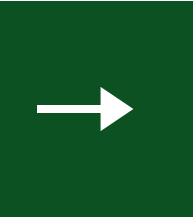
@jmvccse



PINTEREST

@jmvccse

F  
O  
L  
L  
O  
W



---

# Get In Touch



## UK OFFICE

27 Old Gloucester Street  
London WC1N 3AX  
United Kingdom  
020 7419 5671



## US OFFICE

65 Enterprise, Aliso Viejo  
CA 92656, USA



## PH OFFICE

The Symphony Towers  
Sgt. Esguerra St. Timog Avenue  
Quezon City  
Metro Manila  
632 046 483 2079



[www.jmvccse.com](http://www.jmvccse.com)



[info@jmvccse.com](mailto:info@jmvccse.com)

